



BLUE RIDGE

— D Y N A M I C S —

REASON

Lightning Talk



STAR
TREK[®]
THE NEXT GENERATION



Problem Space



- Human-AI interfaces differ from Standard UI in many ways
 - Generate Unexpected Outputs
 - Require non-deterministic interactions
 - Successful HMIs for AI are demographic dependent
- Most successful AI approaches are “black-boxes”
 - Opaque to the user
 - Output is not intuitive
 - Displaying a LLR number does not convey to a user with a Political Science Degree
- Inadequately developed UIs for systems contribute to the “Valley of Death” transition
- Bad UI design can be tragic (Iran Air Flight 655)

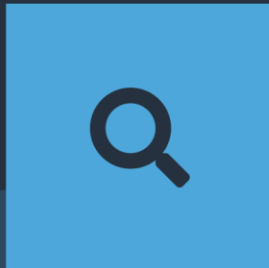
Blue Ridge Dynamics



- **Founded in 2016**
- **UI/UX Design for DoD & Intel**
- **Development**
- **Integration**

Custom UX Process

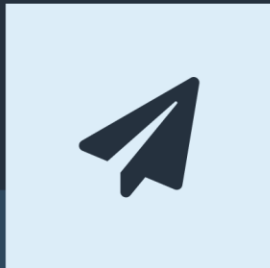
DISCOVERY



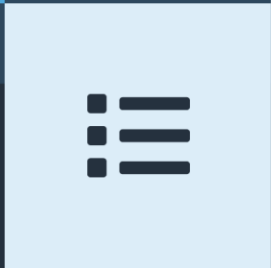
IDEATION



DEV HAND-OFF



UX TESTING



DEFINITION



REFINEMENT



IMPLEMENTATION



REFLECTION



Relevant Past Performance

Over 6 years of proven performance on over 4 DARPA programs creating integrated User Interfaces over multiple TAs.



Previous Work



HIT IDS:

Use commas or spaces to search for multiple hit ids

FILE NAME:

Use * for wildcards

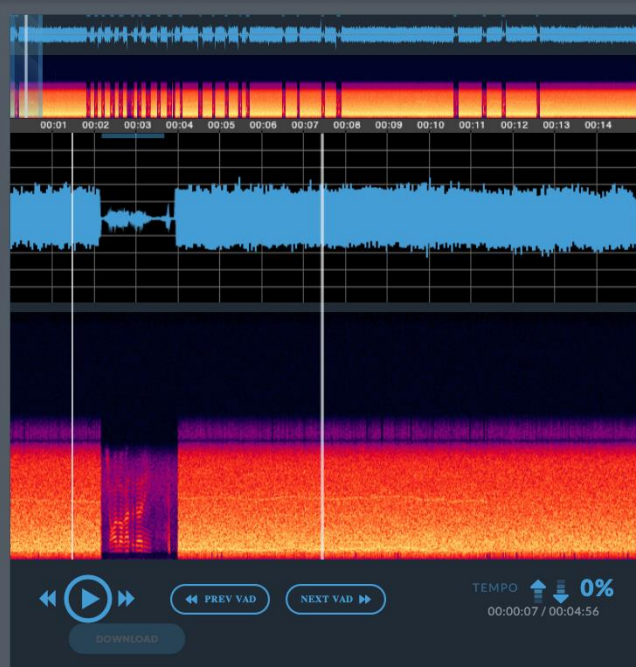
LANGUAGES:



BACK

FILES

- ▶ 2014-04-24-225221.wav
- ▶ english2.wav
- ▶ english5.wav
- ▶ 2014-04-24-225135.wav
- ▶ 20110307_143300_SID10011...
- ▶ 2014-04-24-225306_t.wav
- ▶ sherlock.wav
- ▶ test.wav
- ▶ 2014-04-24-225041.wav
- ▶ spanish2.wav
- ▶ 2014-04-24-225135_t.wav
- ▶ 2014-04-24-225306.wav
- ▶ english3mono.wav
- ▶ 2014-04-24-225041_t.wav
- ▶ 2014-04-24-225221_t.wav



Id: 11

AUDIO INFORMATION

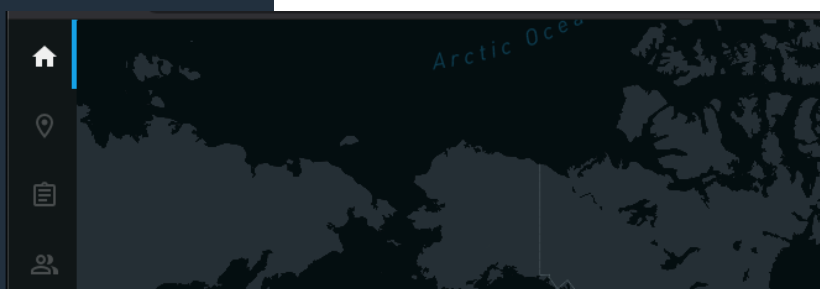
Created: 2020-09-25 02:35
Updated: 2020-09-25 02:35
File Size: 9.04 MB
Duration: 04:56
File Name: /data/bass/bass-rest/src/test/resources/20110307_143300_SID10011002_ara-A-2.wav

HLT INFORMATION

VAD: 25 segments

HELP

- Press 'space' to toggle play/pause
- Press 'a'/'d' keys to jump +/- 5 seconds
- Press 'e'/'q' keys to jump to next/previous speech activity
- Press '-' to decrease tempo
- Press '=' to increase tempo
- Press '0' to reset tempo
- Press 'v' to go back to the main view



EXPORTED VIEW USER VALIDATION PROFILE MANAGER DATA VISUALIZATION

KEYWORD: Keyword

DATE RANGE: From To

ARTIFACT ID: Artifact IDs separated by

DEVICE ID: Device IDs separated by spaces

ARTIFACT TYPES: IMAGE (6394) VIDEO (907) AUDIO (9)

MIME TYPES: IMAGE/JPEG (15660) VIDEO/MP4 (962) IMAGE/PNG (730) VIDEO/3GP (20) IMAGE/GIF (4)

FILE SIZES: FILE EXTENSION: DEVICES:

Timeline | Jan 28, 2018

test test

PATTERN OF LIFE

To customize the pattern of life, click a time block below to cycle through the activity frequencies for the corresponding time period. If you click and drag you can copy a block's frequency to other time blocks.

TECHNOPROBE RANDOM 9 TO 5 NIGHT OWL

DAY: TUE TIME: 6:00

SUN MON TUE WED THU FRI SAT

FREQUENCY: LOW

BlueReel

Keyword: GO

START: Select

END: Select

FACES: unknown_face (138)

LICENSE NUMBERS

OBJECTS: car (23,200) person (10,492) truck (5,043) handbag (126) motorbike (98) fire hydrant (4) parking meter (8) skateboard (5)

Home / New Orleans / Bourbon Street

Tuesday - September 08, 2020 09:33 - 09:43

ACTIVITY



BlueReel

Keyword: GO

START: Select

END: Select

FACES: unknown_face (138)

LICENSE NUMBERS

OBJECTS: car (23,200) person (10,492) truck (5,043) handbag (126) motorbike (98) fire hydrant (4) parking meter (8) skateboard (5)

Home / New Orleans / Bourbon Street

Tuesday - September 08, 2020 09:33 - 09:43

ACTIVITY

BRD Can Provide

- **UI/UX Design**
- **User research**
- **UI Development**
- **Technology Integration**
- **QA Services**

BRD Seeks Partners Who

- **Have technology they want to productize.**
- **Don't have UI/UX designers.**
- **Don't have a UI for their technology.**
- **Need integration help.**

**Thank
you**