

Daybreak

Lightning Talk

Prepared For:



I A R P A
BE THE FUTURE



6 April 2022

Unclassified

Contents



Company Overview



Image Analysis



Artificial Intelligence



Rendering and Modeling & Simulation



Proprietary Tools



Teaming Self-Assessment

Company Overview

Capabilities

- Geospatial
- AI/ML
- Data Analytics
- Agile, SAFe, DevOps
- Intelligence Analysis
- Mission Support

Values

- Mission-Focus
- Innovation
- Integrity
- Respect and Dignity for All

Examples of Customers

- National Geospatial-Intelligence Agency (NGA)
- US Army Special Operations Command (USASOC)
- US Central Command (USCENTCOM)
- VPA (at previous companies)



Company Overview Our Team

Jason Dalton, Co-Founder and CTO

- Founder and CEO, Azimuth1
- Senior Director, GeoEye, VP of Engineering, SPADAC
- Adjunct Faculty, UVA, U. Maryland, U. Missouri – St. Louis

Manik Rath, CEO

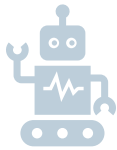
- Co-founder of Alion Science and Technology, a modeling and simulation company serving DoD
- SVP of LMI, a contractor supporting the Sponsor
- CEO of C2 Technologies; modeling and simulation company serving USAF, US Army, Disney, Marriott

Joanne Isham, Board of Advisors

- Deputy Director of National Geospatial-Intelligence Agency (NGA)
- Deputy Director of Science and Technology for the CIA
- National Intelligence Distinguished Service Medal, and the National Intelligence Medal of Achievement

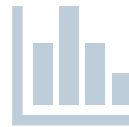
Company Overview

Capabilities



AI and Advanced Information Technology

AI/ML Deep Learning
AI-powered Geospatial Mapping and Object Identification
Computer Vision with ML
No Code and Low Code Application Development



Data Analytics

Geospatial Analytics
Fraud Analysis
Predictive Analytics
Risk Analytics



Geospatial Analysis

Battlespace Awareness
Routing and navigation
Special Operations Forces Support
Environmental Analysis



Intelligence Analysis

Open Source Intelligence (OSINT)
Anti-Money Laundering Intel (AML)
Linguistics and Translation



Mission Support

Acquisition and Procurement Support
Cybersecurity Requirements Analysis
Administrative Support

Capabilities

Image Analysis and Computer Vision

- Delivering understanding of objects in photo, video, and satellite imagery
- Utilizing AI to accelerate the identification of objects, including assessing dimensions
- Detecting Objects from Ground, Aerial, UAS, and Satellite Sensors
- 3D modeling and reconstruction from UAS video

Battlespace Imagery - Drone



Satellite Imagery



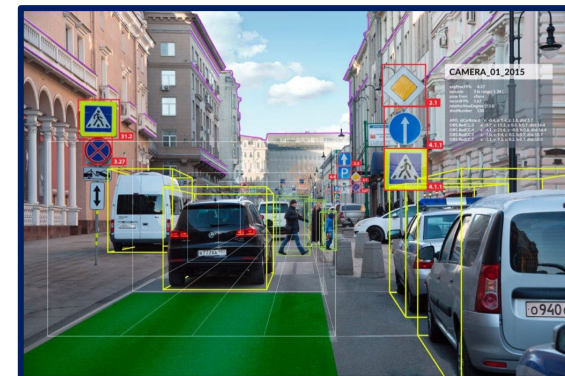
CCTV and Traffic Camera Imagery



Artificial Intelligence

- Our proprietary tools automate the detection, measurement, and identification of objects in imagery and video.
- Understanding, integrating, and rendering images taken from varying altitude will require calibration of objects. This can be automated and accelerated with AI.
- Daybreak's unique geospatial AI augments computer vision by providing context clues from the surrounding area to give greater confidence to the AI model, particularly in poor visibility, image noise, and small objects relative to image size.

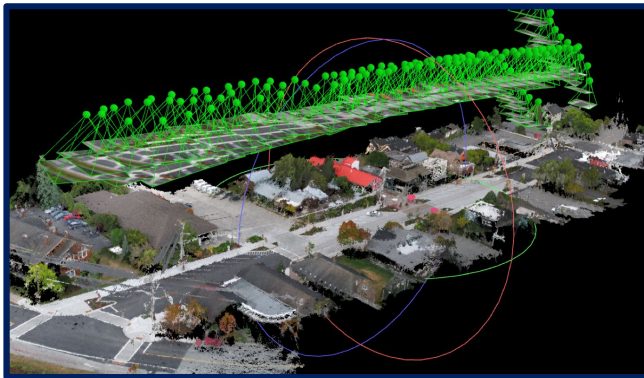
Histograms of Oriented Gradients, used with Scale Invariant Feature Transformation (HOG/SIFT)



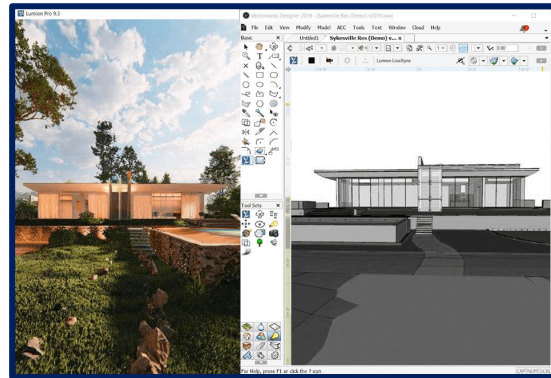
Modeling and Simulation to Support Rendering and Visualization

- Daybreak's 3D physical modeling provides context and precision to inform 3D rendering and visualization, calling attention to important structure and objects in the scene.
- Expertise in tool chains from raw data collection through processing, AI, geospatial registration, and visualization
- Augments the rendering pipeline by providing context recommendations on objects, materials, and age.

Facility remediation: Geospatial reconstruction from UAS video and still images



Rendering a photo-realistic building from a CAD drawing using context clues



Disaster response: Model reveals hidden target under canopy

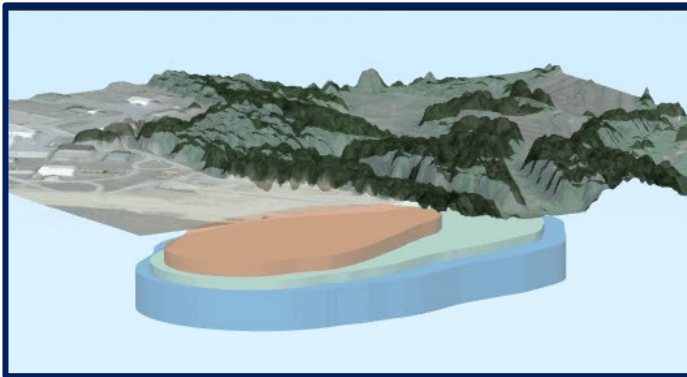


Capabilities & Proprietary Tools

Our full-stack developers invent novel tools powered by AI and ML to analyze, image, model, and understand imagery for a variety of unique problem-sets. Our proprietary tools enjoy adoption by national security customers as well as a wide array of commercial customers.

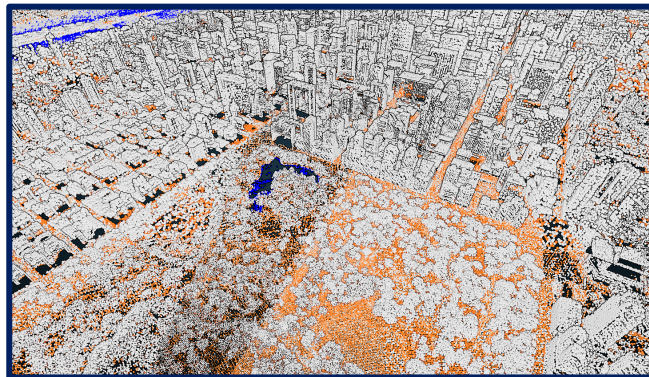
EnviMetric

Machine learning model points investigators to sources and boundaries of underground contamination



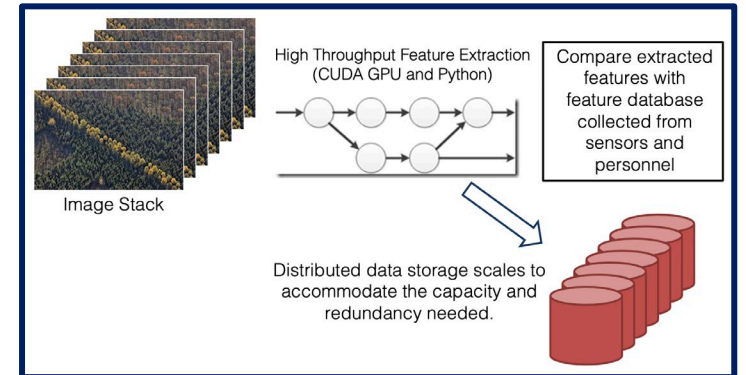
DigitalVista

UAS video stream processing for Public Safety operations



Automated Transportation Lines Monitoring

Railway monitoring compared real time video taken along track lines with database of known infrastructure.



Teaming Self-Assessment

Daybreak Strengths	Daybreak Capabilities/ Teammates Welcome	Seeking Teammates
Image Analysis	Photo-Realistic Rendering	Systems Engineering
AI-driven measurement and computation		Systems Integration
3D Modeling & Simulation		

Contact Us

Jason Dalton
Co-Founder and CTO
(703) 618-8866
JDalton@Daybreak-LLC.com

Manik Rath
CEO and Co-Founder
(703) 582-5552
Mrath@Daybreak-LLC.com

Daybreak
www.Daybreak-LLC.com